

# C3™ & C4™ SERIES OIL-FIRED HOT WATER



## ECONOMICAL HOME HEATING

By combining cast iron durability with state-of-the-art components and controls, the C3 & C4 provide efficient and economical oil-fired hot water heating.

### Cast Iron Dependability

Cast iron absorbs and transfers heat quickly and efficiently while providing unmatched durability.

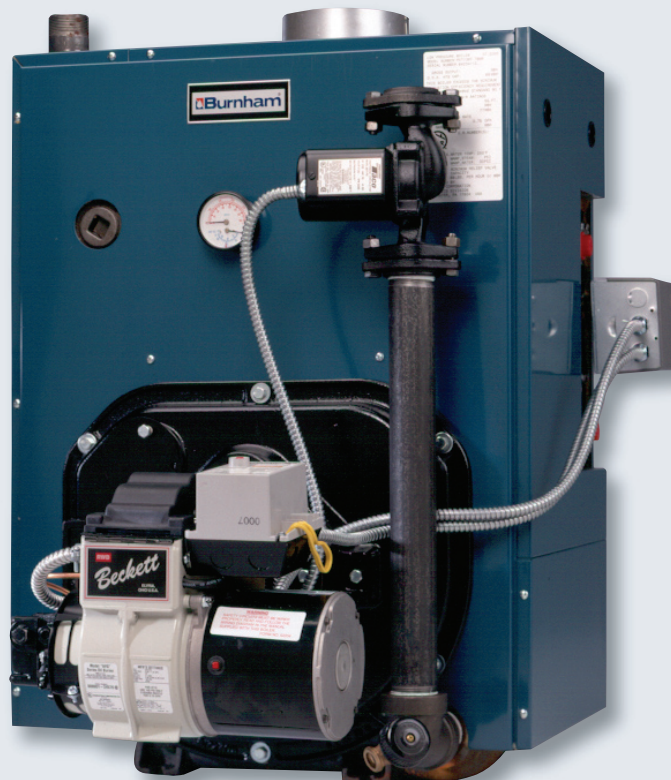
- Rugged cast iron sections are designed to extract the maximum amount of heat which reduces fuel consumption and saves you money.

- Metal Push Nipples join all cast iron sections and expand and contract with the sections ensuring durability. They are impervious to petroleum-based chemicals, which can deteriorate gaskets used in some competitors' boilers.

### Ease of Maintenance and Installation

The C3 & C4 Series Boilers are designed for quick, inexpensive servicing.

- Jacket design allows entry from both the top and side to allow complete access for cleaning.
- Burner swing door provides easy access to the combustion chamber for fast servicing.
- Packaged and ready to install with optional tankless coil for domestic hot water.
- Circulator is prepped and wired for on the spot installation.



# C3 & C4 RATINGS



BOILER MODEL (1)	BURNER CAPACITY GPH (2)	DOE HEATING CAPACITY MBH (3)	I=B=R NET RATINGS MBH (4)	MINIMUM CHIMNEY REQUIREMENTS			AFUE %
				ROUND IN DIAMETER	RECTANGLE IN. x IN.	HEIGHT (FT.)	
C3	0.75	89	77	6	8 x 8	15	83.5
C4	1.20	140	121	6	8 x 8	15	81.7

**Notes:**

- Available as a packaged water boiler only.
  - The Burner Capacity is based on oil having a heating value of 140,000 BTU/GAL.
  - DOE Heating Capacity and Annual Fuel Utilization Efficiency (AFUE) are based on U.S. Government tests at 13.0% CO<sub>2</sub> with No. 1 maximum smoke and -0.02 inches water column over fire draft on standard equipment package.
  - Net I=B selecting boiler.
- Maximum Working Pressure: 30 PSI water.

# C3 & C4 DIMENSIONS AND STANDARD EQUIPMENT

Boiler Model	A	B	C
C3	16"	8-3/4"	6"
C4	20"	10-3/4"	6"

**Standard Equipment:**

- Cast Iron Section Assembly
- Deluxe Insulated Jacket
- Burner Swing Door & Mounting Plate Beckett
- Flame Retention Burner
- Boiler Drain Valve
- Barometric Draft Regulator
- 14000 Volt Electric Ignitor
- Solenoid Oil Valve
- 1-1/2" Supply Connection
- Relief Valve
- Combination High Limit Circulator Relay Control
- Pressure/Temperature Gauge
- Protectorelay Control Circulator

## OPTIONAL TANKLESS HEATERS

OPTIONAL TANKLESS HEATERS		
BOILER MODEL	HEATER MODEL	HEATER GPM OUTPUT (1)
C3	V1-2	3.25
C4	V1-1	3.5

**Notes:**

- Tankless heater rating G.P.M. based on 100°F rise with 40°F inlet water (intermittent draw) with boiler water temperature of 200° F.

**Other Optional Equipment:**

- Two stage fuel unit

## LIFETIME LIMITED WARRANTY

Every C3 & C4 cast iron heat exchanger is covered by Burnham's Lifetime True Blue Limited Warranty.



Form No. PL81401271001-6/05-.3Mw  
 Printed in the U.S.A.  
 ©2005 U.S. Boiler Company, Inc. - Lancaster, PA  
 Phone: 717-397-4701  
 www.burnham.com