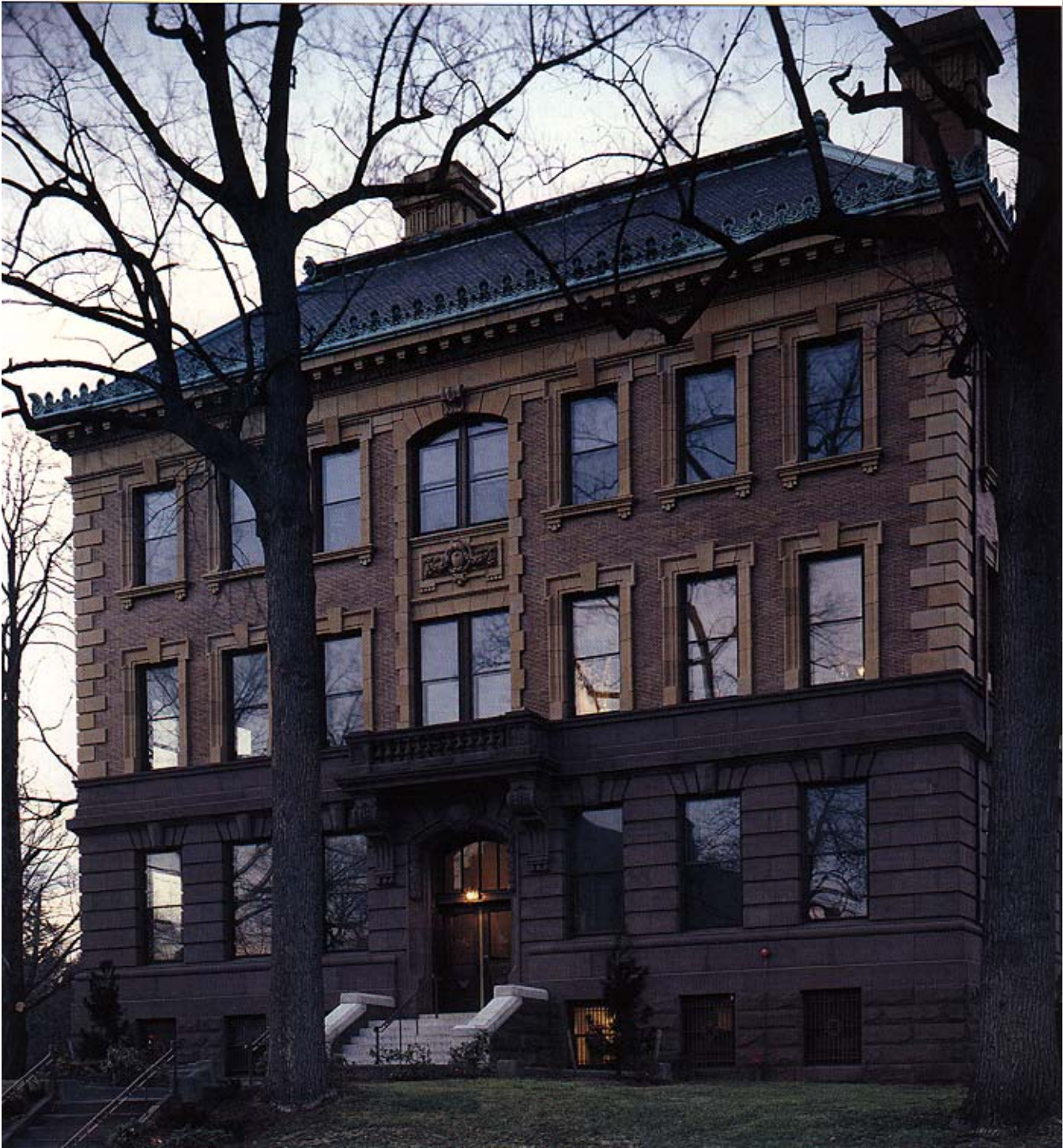


**EFFICIENT & ECONOMICAL  
GAS FIRED HOT WATER HOME HEATING**



# SPACEMASTER™



# BURNHAM GAS-FIRED HOT WATER BOILER

## Your Solution to Save Space While Reducing Fuel Bills

The space-saving Burnham Hydronics Spacemaster™ boiler mounts easily to any exterior wall and has an annual fuel utilization efficiency of up to 82.5%. This makes it ideal for installation in single-family homes, apartments, condominiums, and other multi-family buildings where saving space is important and a chimney may not be available.

### Space-Saving Solution

By installing the Spacemaster boiler, everyone's a winner. You can save money on heating bills while saving valuable living space, and have the comfort of knowing that everyone is warm.

At the heart of every Spacemaster boiler is a dependable cast iron design that enhances energy efficiency and improves boiler performance. In fact, the cast iron sections have greater water content than other boilers used in similar applications. This can extend the life of the boiler, protect it against adverse operating conditions, and assure quiet operation. Burnham also backs the Spacemaster with a Lifetime Limited Warranty on the heat exchanger.



The addition of Burnham Hydronics Baseray® cast iron baseboard can contribute to the space-saving efficiency of the Spacemaster. Baseray is a compact baseboard style heat distributor that can be painted to coordinate with your room's color scheme. Installed on exterior walls, Baseray radiators emit uniform heat throughout the room while saving valuable floor space.

For even greater space saving, combine the Spacemaster with Burnham Radiant floor heating. Radiant floor heat is totally invisible heat. It is located in or under your floor surface so no square footage is lost to heat distributors.

### Money-Saving Solution

If your present boiler is like many older gas boilers, it's probably operating at an annual efficiency of only 60%, which means that much of the heat you paid for is going right up the chimney. So, when you upgrade to a Burnham Spacemaster boiler that is up to 82.5% efficient, you get more usable heat for your dollar.



### Hot-Water Solution

Since hydronic heat uses hot water generated by the boiler and distributes it through your home in sealed pipes, its temperature is very easily controlled and directed to different areas, or zones, of your home. Different temperatures can be set for different zones depending on the use.

In this way, the Spacemaster can be combined with the Burnham Hydronics Alliance™ indirect-fired water heater for installations requiring high volumes of domestic hot water. The Alliance uses the heating power of the Spacemaster to provide abundant domestic hot water year round.



### Hydronic-Heating Solution

Hydronic heating is cleaner, more versatile, and more comfortable than alternative heating systems. Burnham Hydronics makes heating your home and hot water with a gas-fired boiler a practical investment today and one you'll appreciate over the years.

By comparing features, fuel efficiency, boiler life, safety, and ease of maintenance, you'll discover that the Spacemaster wall mounted boiler from Burnham Hydronics is an excellent investment in quality home heating.

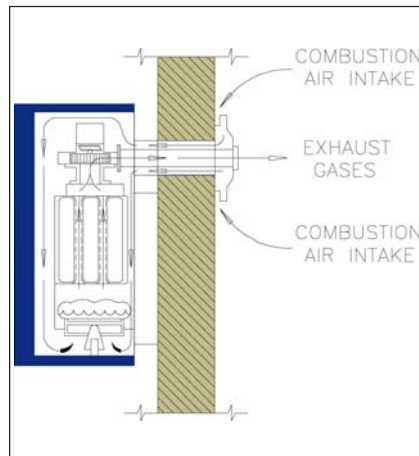
## Innovative Boiler Design

Burnham Hydronics' high efficiency Spacemaster boiler is truly a compact boiler design innovation. It is designed as a sealed unit for direct vent application; combustion air is taken directly from the outside and the products of combustion are exhausted through the same vent pipe.

The Spacemaster is equipped with state-of-the-art controls to ensure reliable operation over the life of your boiler, such as:

- An electronic ignition coupled with a redundant gas valve is standard on both sizes of the

Spacemaster gas-fired boiler. This control arrangement provides a 90 second try for pilot light following shutdown. If the pilot is not



Sealed Combustion

established after this period, the entire system safely shuts down.

- An air pressure switch monitors airflow to the boiler. If insufficient air for proper boiler operation is detected, the boiler shuts down.
- A flame rollout switch protects against flame rollout.
- A high limit control prevents boiler water from overheating.

So if you're looking for cast iron efficiency in a small space-saving package, the Spacemaster is your solution.

## Dimensions (in inches) and Standard Equipment

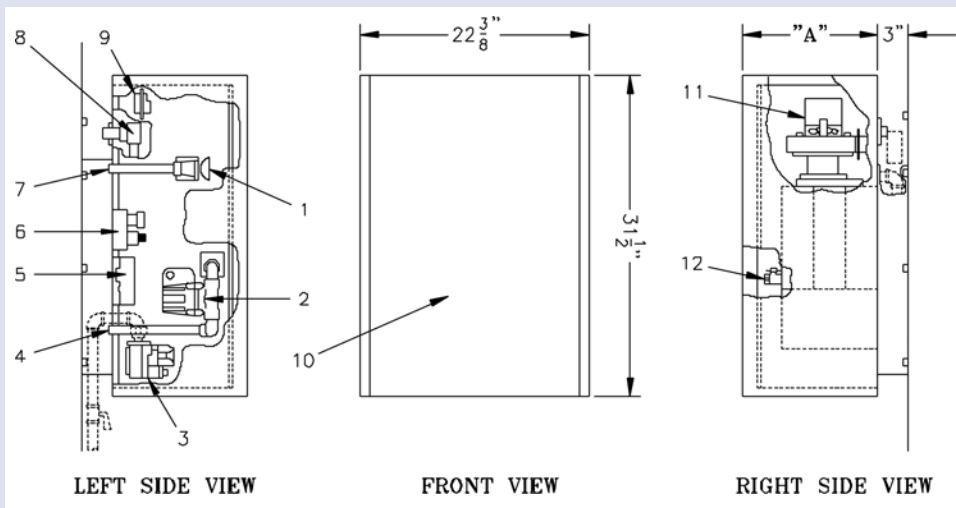
### Standard Equipment

1. Pressure Temperature Gauge
2. Circulator
3. 100% Shut-off Redundant Combination Gas Valve
4. 3/4" Copper Return Connection
5. Electronic Ignition
6. Junction Box with Transformer and Circulator Relay
7. 3/4" Copper Supply Connection
8. Safety Relief Valve
9. Suction Pressure Switch
10. Deluxe Insulated Jacket
11. Induced Draft Fan
12. Boiler Drain Valve

### Not Shown

- High Limit Thermostat
- Flame Rollout Switch
- Stainless Steel Burners
- Venting Packaging (for 5" to 9" thick walls)

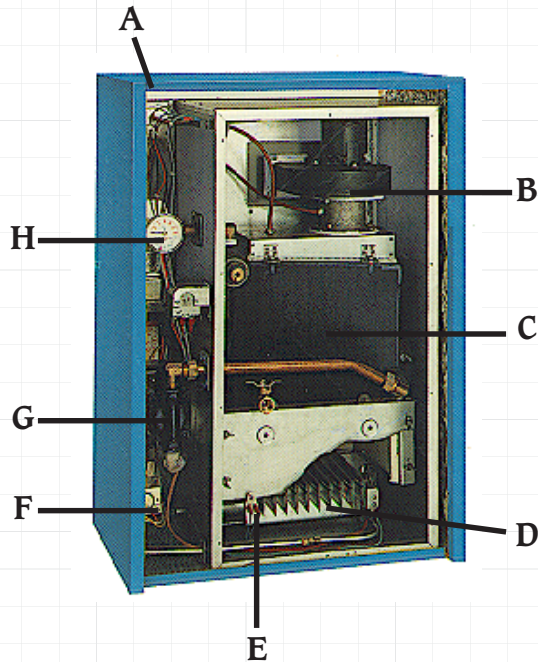
Boiler Number	A	Gas Connection	Recommended Mounting Height
SM3	14-1/8"	1/2"	66"
SM4	17-3/8"	1/2"	66"



# SPECIFICATIONS



## SPACEMASTER™



- A. Deluxe insulated jacket
- B. Induced draft fan
- C. Durable cast iron sections for long life
- D. Stainless steel burners
- E. Flame roll-out switch
- F. Gas valve
- G. Self-lubricating circulator never needs oil
- H. Pressure temperature gauge

All Spacemaster boilers are factory fire tested.

### RATINGS Natural Gas Only

BOILER NUMBER	INPUT MBH (1)	DOE HEATING CAPACITY MBH	I=B=R NET RATING MBH (2)	AFUE%
SM3	70	58	50	82.5
SM4	105	85	74	80.3

- Ratings shown are for installations at sea level and elevations up to 2,000 ft. For elevations above 2,000 ft., ratings should be reduced at the rate of four percent (4%) for each 1,000 ft. above sea level.
- Net I=B=R ratings shown are based on normal I=B=R piping and pick-up allowance of 1.15. Consult the manufacturer for installations having unusual piping and pick-up requirements such as intermittent system operation, extensive piping systems, etc.

**Maximum Working Pressure: 45 PSI**

Optional Equipment:  
 Venting package - 9" to 15" thick walls  
 Probe type low water cut-off

