

PROVIDING COMFORT, QUALITY AND WORRY-FREE PERFORMANCE

	M1200/M1200 Plus	M120	Air Conditioner	Heat Pump	Best Efficiency	Better Efficiency	Good Efficiency	R-410A Refrigerant*	R-22 Refrigerant	Improves Air Quality	Balanced Temperature	Sound Quality	Reduced Utility Costs	Resists Corrosion	Energy Star Certified
AIR CONDITIONER & HEAT PUMP MODELS															
23 SEER with iQ Drive®	X	X	X	X	X	X	X	X	X	X	X	X	X	X	X
16 SEER, 2-Stage, Variable-Speed	X	X	X	X	X	X	X	X	X	X	X	X	X	X	X
14/15 SEER, Variable-Speed	X	X	X	X	X	X	X	X	X	X	X	X	X	X	X
13/14 SEER, Fixed-Speed	X	X	X	X	X	X	X	X	X	X	X	X	X	X	X
AIR HANDLER MODELS															
15+ SEER, Variable-Speed	X	X	X	X	X	X	X	X	X	X	X	X	X	X	X
13+ SEER, Variable-Speed	X	X	X	X	X	X	X	X	X	X	X	X	X	X	X
13 SEER, Multi-Speed	X	X	X	X	X	X	X	X	X	X	X	X	X	X	X
WARRANTY															
12-Year Labor Option (M1200 Plus)	X														
12-Year Parts	X	X													
12-Year Dependability Promise	X														
1-Year Dependability Promise		X													
FEATURES - AIR CONDITIONERS & HEAT PUMPS															
Louvered Stainless Steel Cabinet	X														X
Steel Guard™ Encasing		X													X
Ultra Tech Copeland Scroll™ Compressor	X							X	X	X	X				
Scroll Compressor	X	X									X				
Permanently Lubricated Motor	X	X									X				
Compressor Sound Blanket	X										X				
FEATURES - AIR HANDLERS															
Stainless Steel															X
Galvanized Steel		X													X
Variable-Speed Motor		X						X	X		X				
Quiet Blower Operation		X									X				
Plastic Drain Pan		X													X
Circuit Board		X										X			
ACCESSORIES															
Electronic Air Cleaner	X	X						X							
HEPA Air Cleaner	X	X						X							
Media Retrofit Air Cleaner	X	X						X							
1" Electronic Air Cleaner	X	X						X							
Ultraviolet Light	X	X						X							
Thermostat	X	X							X			X			
Indoor Coil	X	X										X			
Humidifier	X	X						X							
Heat/Energy Recovery Ventilator (HRV/ERV)	X	X						X							
Zoning	X	X						X		X					

*Environmentally Friendly - Smart Cool 410™



This product uses environmentally friendly refrigerant.



www.maytagvac.com



Specifications and illustrations subject to change without notice and without incurring obligation.

Copeland Scroll is a trademark of Copeland Corporation. Steel Guard, SmartCool and ecoLogic are trademarks of NORDYNE. iQ Drive is a registered trademark of NORDYNE. Printed in the U.S.A.

Manufactured under license by NORDYNE, O'Fallon, MO. ©Registered Trademark™/Trademark of Maytag Corporation or its related companies. ©2008 All rights reserved. 290C-0408



M1200 Plus Air Conditioner/Air Handler System with iQ Drive® Technology to 23 SEER



M1200 Plus Air Conditioner/Air Handler System with iQ Drive Technology Up to 23 SEER

The Maytag iQ Drive Complete-Comfort System is quite simply the smartest comfort system available. It's the only system that not only controls temperature, but also achieves the most consistent levels of humidity, air quality and ventilation. And all at the lowest sound levels in the industry.

The Maytag iQ Drive Complete-Comfort System Delivers Total Indoor Air Quality

The Maytag iQ Drive Complete-Comfort System circulates air throughout your home by mixing air from floor to ceiling. Its variable-speed technology creates more uniform temperatures, improved air filtration and reduced humidity levels. In fact, it is ideal for managing the indoor environment in hot, humid climates. With a touch of the iQ Drive thermostat, you can set dehumidification levels from 35% to 70% of the humidity inside the home.

To take total control of your indoor air quality, you can program the iQ Drive thermostat to notify you when it is time to change your filter. Having a clean filter is key to circulating healthier indoor air. If you have allergies and need to remove dust, smoke or other airborne particles, Maytag also offers numerous whole-home indoor air quality products designed to work with the iQ Drive Comfort System.



Comfort When You Need It

The iQ Drive System can be easily programmed to your schedule, saving energy when you're not home. You can program a 7-day comfort schedule to control up to four specific events at precise times of the day such as wake-up time, work time, home arrival or sleep time. You can even set a vacation mode for ultimate energy efficiency while you're away.

Smart, Dependable Comfort

The Maytag iQ Drive System utilizes inverter rotary technology to achieve the highest efficiency level available today. The inverter board is the brain of the system, while the rotary compressor is its heart. By communicating together, they can condition the air perfectly at all times while using the least amount of energy.

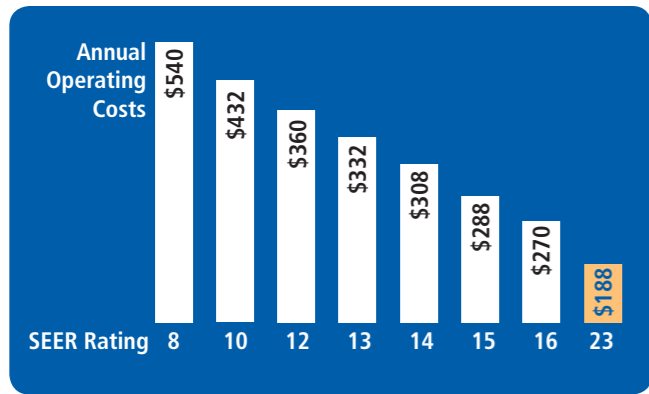
Should a performance error occur, the iQ Drive thermostat will report on-screen that a fault has been detected. This allows the Maytag dealer to quickly diagnose the cause of the error, making service quick and easy.

A key to longevity of any cooling or heating system is proper maintenance. With the iQ Drive thermostat, you can ask the dealer to preprogram maintenance reminders for indoor



air-quality accessories that you decide to add to your system. A home comfort system is an investment to ensure that your family is comfortable for years to come.

Maytag iQ Drive System for Dependable Total Home Comfort



Annual costs based on 36,000 Btu unit, 1,500 cooling load hours and .08/kwh. Actual costs may vary depending on climate conditions, energy rates and patterns of usage.

Seasonal Energy Efficiency Ratio (SEER) is the unit by which all air conditioning energy efficiency is measured. In the world of air conditioning, the higher the SEER, the better the efficiency and the lower your power bills.

While most homes built in the last 10 years have 8 to 10 SEER air conditioners, Maytag has raised the bar to 23 SEER, the highest efficiency level yet in air conditioning. Just a few of the many benefits include:

- Lower energy bills
- Better dehumidification
- Reduced hot and cold spots
- The lowest sound levels ever



So Smart, iQ Delivers the Highest Energy Efficiency

The Maytag iQ Drive System utilizes inverter rotary technology to achieve the highest efficiency level available today.

Compressor Type	
Scroll	60 Hz
Rotary	AS LOW AS 15 Hz

Traditional compressors just turn on and off, operating at

60 hertz when running. But iQ Drive inverter technology has almost infinite modulation for a perfectly even variance. And it runs as low as 15 hertz, so it uses less power.

So while traditional compressors kick on at full speed to compensate for a small change in temperature, iQ Drive inverter technology alters the compressor speed just enough to match the slightest change in air temperature. In addition

to minimal power utilization, you get a more consistent temperature level – and less hot and cold spots – at all times.

So Quiet, You May Forget You Have It

Compressor Type	
Scroll	3,600 rpm
Rotary	AS LOW AS 900 rpm

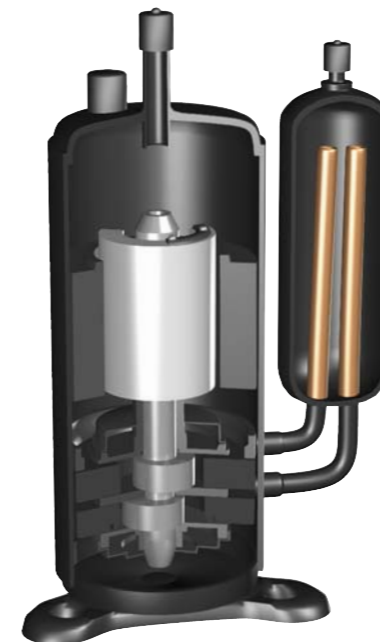
Thanks to its impressive efficiency, the Maytag

iQ Drive Comfort System delivers the lowest sound levels in the industry. Today's traditional compressors operate at 3,600 rpm power. So even with full insulation, sound blanket, sound-absorbing base, lubricated motor and swept fan blade, they make enough noise to be heard inside the home.

By comparison, the Maytag iQ Drive rotary compressor can ramp down to 900 rpm for ultra-low power operation and an ultra-low noise level. That makes for a quieter home, especially at night.

Making Your iQ Drive System Complete

Maytag iQ Drive System is designed to work with other Maytag accessories. Ask your dealer about whole-home humidifiers, air cleaners, HEPA systems and more. If allergens, dust, mold, pet odor, dry air, temperature control or other irritants are a problem for you or your family members, ask us how we can design a Maytag system to reduce common irritants and increase comfort throughout the home.



Maytag Delivers Dependability

For Total Home Comfort

- Maytag delivers more than just better indoor comfort. You should also feel comfortable about investing in a product that will perform when you need it most. Each Maytag air conditioner is quality-checked approximately 144 times during the manufacturing process, then run- tested to check operation performance. In the final analysis, computer-automated testing is performed to capture operation data for future reference should your dealer ever need it.
- The Maytag iQ Drive System is built with proven components to provide safe, clean and reliable comfort year-round.
- The iQ Drive System meets the Energy Star guidelines for efficiency performance. The bottom line to you is savings in your utility costs.



Unsurpassed in Warranty Protection

When a complete heating and cooling system is truly built to exacting standards of quality and durability, the manufacturer's confidence shows in its warranty. The Maytag iQ Drive System is dependable for the long haul, which

is why it offers a 12-year Worry-Free Limited Warranty on all parts. Your dealer has also included a 12-year labor warranty for added peace of mind.

Maytag Dependability Promise

Every Maytag iQ Drive Comfort System features our Dependability Promise:

In the first 12 years, if the compressor fails in our iQ Drive System, we will replace the entire unit with an equivalent Maytag replacement.

Ask your Maytag dealer or visit us at www.maytagvac.com for warranty details.



Protective Durability

A full metal jacket protects the coil from damage by weather and flying debris. These models feature brushed, stainless steel cabinets and doors for superior quality and rust-free durability.



M1200 Plus Air Conditioner/Air Handler System with iQ Drive Technology Up to 23 SEER

Smart. Quiet. Reliable. Earth-friendly. Better, consistent home comfort. And the lowest energy bills possible. It could be the smartest system we've ever made.



Look for our ecoLogic™ seal, your sign of the most energy-efficient, environmentally responsible products Maytag offers.

Top-of-the-Industry Installation and Service

When choosing your heating and cooling system, look not only at the products, but also at the service and support provided by the dealer. Maytag dealers receive extensive training in the installation and care of your equipment. That means your Maytag dealer can help you select the right system for your home and keep it in top operating condition.

For more information, contact us, your Maytag dealer:

